

MOTOR SPECIFICATION SHEET

MODEL : SF-JR 1/4HP 4P IP44 (LT)

USED FOR : STANDARD

| DESCRIPTION | DETAIL | | | | |
|----------------------------------|---|------|------|------|------|
| PHASE | 3 | | | | |
| MODEL NAME | SF-JR | | | | |
| RATED OUTPUT, HP (kW) | 1/4 (0.2) | | | | |
| POLE | 4 | | | | |
| CODE | MEATH CODE : 1M002F-400020JRFX0 | | | | |
| OUTLINE DRAWING NO. | ONM64O177-* | | | | |
| RATED VOLTAGE (V) | 220 | 380 | 415 | 220 | 440 |
| RATED FREQUENCY (Hz) | 50 | 50 | 50 | 60 | 60 |
| RATED CURRENT (A) | 1.11 | 0.64 | 0.69 | 0.97 | 0.61 |
| RATED SPEED (min ⁻¹) | 1430 | 1430 | 1440 | 1730 | 1750 |
| THERMAL CLASS | 130(B) | | | | |
| RATING | S1 (CONTINUOUS) | | | | |
| ENCLOSURE CONSTRUCTION | TOTALLY ENCLOSED FAN COOLED | | | | |
| DEGREES OF PROTECTION | IP44 | | | | |
| METHOD OF COOLING | IC411 | | | | |
| FRAME NO. | 63M | | | | |
| WEIGHT (kg) | 5.5 | | | | |
| STANDARD | IEC 60034-1, JEC-2137-2000 | | | | |
| INSTALLATION | FOOT MOUNTED | | | | |
| ROTATION | CCW (VIEWED FROM SHAFT END) | | | | |
| BEARING | LOAD SIDE : 6201ZZ | | | | |
| | OPPOSITE SIDE : 6201ZZ | | | | |
| BEARING GREASE | UREA GREASE | | | | |
| NOISE (dB.A) | 59 | | | | |
| VIBRATION | V15 | | | | |
| CIRCUMSTANCE CONDITION | AMBIENT TEMPERATURE : -20 ~ +40°C | | | | |
| | AMBIENT HUMIDITY : 95%RH OR LESS | | | | |
| | ABOVE SEA LEVEL : 1000m OR LESS | | | | |
| | ENVIRONMENT : NO BURSTING/EROSIVE GAS OR VAPOR | | | | |
| COLOR | MUNSELL N5.5 (GRAY) | | | | |
| LEAD OUT | NO. OF LEAD WIRES : 6 | | | | |
| | SOURCE CONNECTION : LEAD WIRES | | | | |
| INSULATION RESISTANCE | BY DC 500V MEGGER - ≥100MΩ | | | | |
| DIELECTRIC TEST | AC 50Hz 1800V - 1min. (Based on rated voltage 380V) | | | | |
| SHAFT SWING | ≤0.03mm | | | | |
| MATERIAL | FRAME : STEEL PLATE | | | | |
| | BRACKET : STEEL PLATE | | | | |
| | SHAFT : CARBON STEEL | | | | |
| | STATOR CORE : ELECTRICAL STEEL | | | | |
| | WIRE : ENAMELLED COPPER MAGNET WIRE | | | | |
| | INSULATOR : POLYESTER FILM | | | | |
| | VARNISH : EPOXY DENATURALIZATION POLYESTER | | | | |
| | ROTOR CORE : ELECTRICAL STEEL | | | | |
| | CONDUCTOR : ALUMINIUM | | | | |
| | TERMINAL BOX : N/A | | | | |
| | PAINTING : ALKYD-NITROCELLULOSE RESIN | | | | |
| PRODUCTION COUNTRY | THAILAND | | | | |

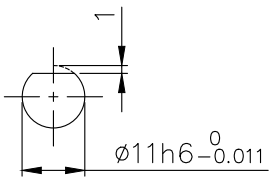
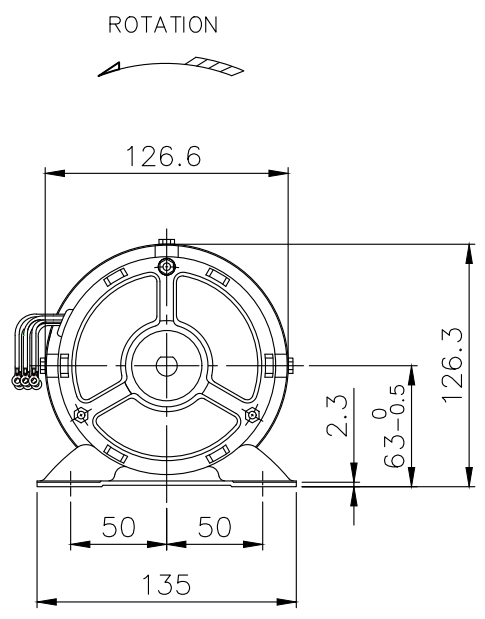
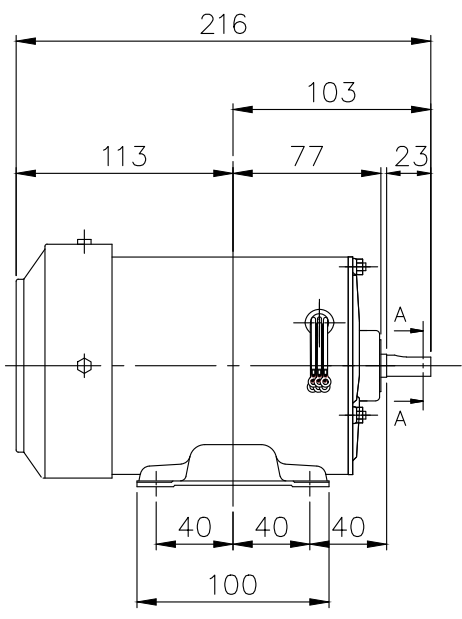
Specifications subject to change without notice.

| | | | | |
|--------------------------------|--|--|--|--|
| SPECIFICATION SHEET NO. | | | | |
| SS-M-6547-A | | | | |

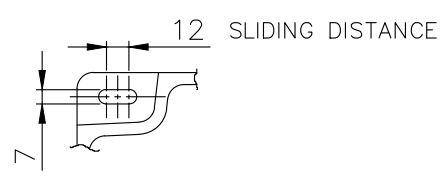
MODEL SF-JR THREE PHASE INDUCTION MOTOR OUTLINE DRAWING

TOTALLY ENCLOSED FAN COOLED TYPE
 DEGREES OF PROTECTION IP44

CUSTOMER _____
 USER _____
 FOR _____
 CUSTOMER'S ORDER NO. _____
 QUANTITY _____
 MFG. ORDER NO. _____



SECTION A-A



FRAME FOOT AS VIEWED FROM BELOW

| FRAME SIZE | RATING | TH. CLASS | AMB. TEMP. | BEARINGS | | COLOR | DIRECTION OF ROTATION (VIEWED FROM SHAFT END) | NO. OF LEAD WIRES | REMARKS |
|------------|------------|-----------|-------------|-----------|-----------|---------------------|---|-------------------|---------|
| | | | | LOAD SIDE | OPP. SIDE | | | | |
| 63M | S1 (CONT.) | 130(B) | 40°C | 6201ZZ | 6201ZZ | GRAY (MUNSELL N5.5) | CCW | 6 | |
| OUTPUT | | POLES | VOLT | HERTZ | REMARKS | | | | |
| HP | kW | | | | | | | | |
| 1/4 | 0.2 | 4 | 220/380/415 | 50 | LT | | | | |
| | | | 220/440 | 60 | | | | | |

MITSUBISHI ELECTRIC AUTOMATION (THAILAND) CO., LTD.

| | | | | |
|-------------|------------------|--|---------------------|------|
| | | | OUTLINE DRAWING NO. | REV. |
| | DIMENSION IN mm. | | O N M 6 4 0 1 7 7 | * |
| SCALE : NTS | | | | |